

## Secrets of the Douro



6th June 2026

Price from

**£3166<sub>pp</sub>**

£4200 for a top Deck  
Panorama suite.

*Past guest  
loyalty discounts  
available up to £400<sub>pp</sub>*

A repeat sailing aboard  
the fabulous Emerald  
Radiance with its superb  
Crew, food & inclusions.

## *Fly from Humberside via Amsterdam to Porto*

**Day 1**

**Saturday  
06 June**

**Porto (D)**

Welcome to Porto, where you will be met at the airport and transferred to your contemporary Emerald Cruises Star-Ship, Emerald Radiance. This evening, join your fellow guests for dinner on board.

**Day 2**

**Sunday  
07 June**

**Porto – Pinhão (B,L,D)**

Relax on board today and enjoy a full day of sailing through the UNESCO World Heritage-listed Douro Valley. This fascinating area is celebrated because it builds on two millennia of wine producing history, where viticulture has shaped the surrounding landscape and small, sleepy villages are peppered with dozens of sun-drenched vineyards.

Tonight, enjoy a welcome dinner and cocktail reception.

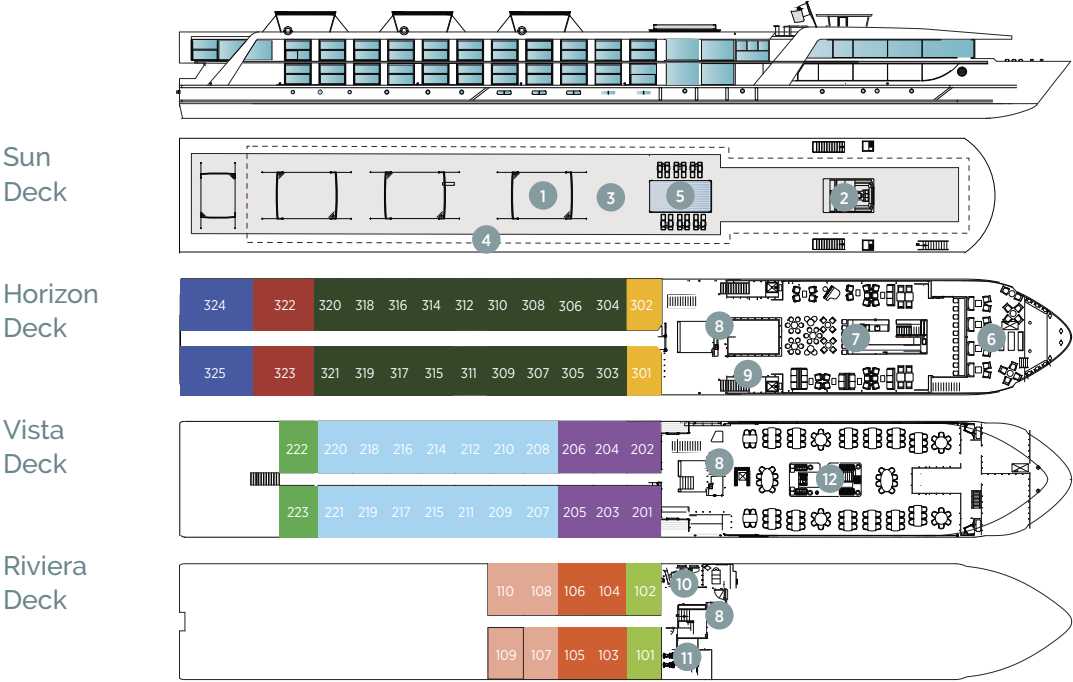
**EmeraldPLUS**

Portuguese cooking demonstration on board

# Douro deck plans

## Emerald Radiance

• Built: 2017 • Length: 292ft (89m) • Guests: 112 • Cabins: 56 • Crew Members: 37



Cabin Categories		
Horizon Deck		Size ft² (m²)
CAT RA	Emerald Riverview Suite	300ft² (27.9m²)
CAT SA	Owner's One-Bedroom Suite	285ft² (26.5m²)
CAT P	Emerald Panorama Balcony Suite	170ft² (15.8m²)
CAT A	Emerald Panorama Balcony Suite	160ft² (14.9m²)
Vista Deck		Size ft² (m²)
CAT R	Emerald Panorama Balcony Suite	188ft² (17.5m²)
CAT B	Emerald Panorama Balcony Suite	160ft² (14.9m²)
CAT C	Emerald Panorama Balcony Suite	160ft² (14.9m²)
Riviera Deck		Size ft² (m²)
CAT D	Emerald Stateroom	170ft² (15.8m²)
CAT E	Emerald Stateroom	160ft² (14.9m²)
CAT F	Emerald Stateroom	153ft² (14.3m²)

- 1

Sun Deck with Deck Chairs<sup>^</sup>
- 2

Navigation Bridge
- 3

Sky Barbecue
- 4

Walking Track
- 5

Spa-style Serenity Pool
- 6

The Terrace

7

Horizon Bar & Lounge

8

Lift

9

Reception

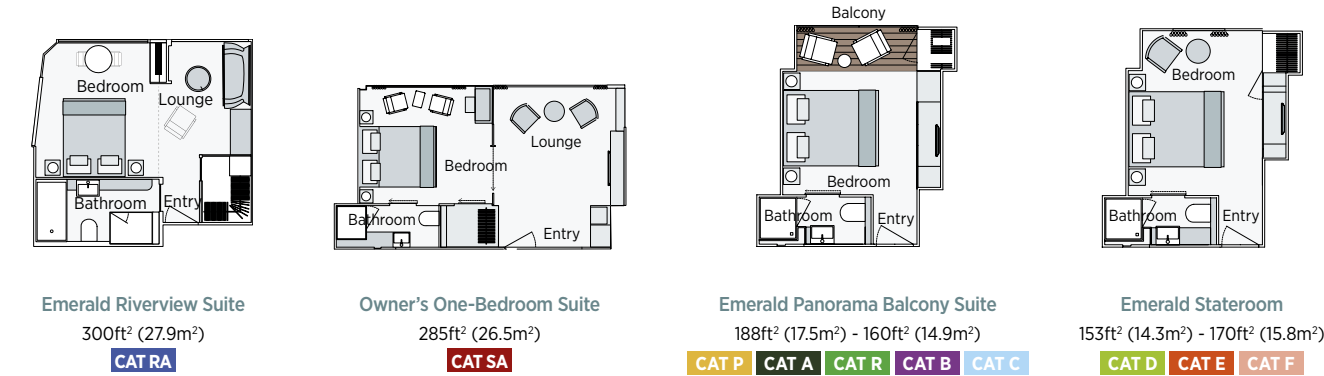
10

Wellness Area

11

Fitness Area

12

Reflections Restaurant

**Important Information:** The cabin and deck plans, sizes and photographs are an indication only and are subject to variation.  
<sup>^</sup> Due to safety, the Sun Deck will be closed when travelling under low bridges.

<b>Day 3</b>	<b>Pinhão – Vega de Terrón (B,L,D)</b>
<b>Monday</b>	Begin your day with a visit to the beautiful Quinta do Tedo vineyard in the heart of Portugal's Douro Valley, nestled on the confluence of the Douro and Tedo rivers.
<b>08 June</b>	This 18th-century estate is environmentally sound, creating organic produce by using traditional viticulture methods. Alternatively, enjoy a guided walk through local vineyards, stopping along the way to admire your surroundings. Alternatively, embark on a kayak excursion along the river, taking in the impressive views from the heart of the Douro Valley. This afternoon, enjoy sailing to Vega de Terrón, perhaps relaxing on the Sun Deck. <b>Included Excursion</b> Visit to Quinta do Tedo with wine tasting <b>EmeraldACTIVE</b> Kayak experience in Pinhão <b>EmeraldACTIVE</b> Guided active walk through the vineyards
<hr/>	
<b>Day 4</b>	<b>Vega de Terrón – Salamanca (B,D)</b>
<b>Tuesday</b>	Founded in Roman times, the ancient city of Salamanca and its UNESCO World Heritage-listed Old Quarter have an illustrious past, having been held by the Carthaginians, Romans, and Moors.
<b>9 June</b>	Travel to the beautiful 'Golden City' for a walking tour, which includes exploring the postcard-worthy galleries and arcades that adorn Plaza Mayor. You'll also have the opportunity to see Casa de las Conchas, a building that has been lovingly decorated with more than 300 shells, and Salamanca's university, one of the oldest universities in Europe that dates back to 1218. (2 hour coach journey) <b>Included Excursion</b> Guided tour of Salamanca <b>EmeraldPLUS</b> Tuna music band in Salamanca
<hr/>	
<b>Day 5</b>	<b>Pocinho – Régua (B,L,D)</b>
<b>Wed.</b>	This morning, we are docked in Pocinho from where we take you to the charming medieval town of Castelo Rodrigo. On your tour you will have the chance to uncover the secrets of this small village's fortress history and try some typical local products. Later, return to your Star-Ship for lunch and soak up your idyllic surrounds, enjoying a Port wine cocktail lesson on board as you sail towards Régua.
<b>10 June</b>	<b>Included Excursion</b> Tour to Castelo Rodrigo <b>EmeraldPLUS</b> Port wine cocktail lesson on board <b>DiscoverMORE</b> Archaeological tour by 4x4 at the Côa Valley Museum (extra expense)
<hr/>	
<b>Day 6</b>	<b>Régua (B,L,D)</b>
<b>Thursday</b>	On today's included excursion, you'll visit the marvellous Baroque village of Lamego, stopping to see the picturesque Shrine of Our Lady of Remedies, a structure that stands gracefully over the town. If you're feeling active, enjoy an invigorating walk down the 686 steps from the Sanctuary to the main square. On the same day you will get to experience a rural lunch at Quinta da Pacheca, one of the finest estates of river Douro and learn about the Portuguese mosaic painting tradition.
<b>11 June</b>	<b>Included Excursion</b> Guided tour of Lamego <b>EmeraldPLUS</b> Rural lunch at Quinta da Pacheca <b>EmeraldPLUS</b> Mosaic tile painting lesson on board <b>EmeraldACTIVE</b> Walk down the steps of the Sanctuary of Our Lady of Remedies <b>DiscoverMORE</b> Visit to Mateus Manor House (extra expense)

**Day 7**  
**Friday**  
**12 June**

### **Porto (B,L,D)**

Located at the mouth of the Douro River, Porto is a fascinating and eclectic mix of modern and ancient architecture. Famous for its export of Port wines, it's easy to imagine how British merchant ships would have once clustered together in the medieval harbour, waiting to take their produce across the water.

Your included tour of the coastal city will touch on the fortified structures of Castelo da Foz and Castelo do Queijo, a building whose pentagonal façades overlook the ocean. For those who wish to see the charms of Porto on foot, our active walk through the town will bring you closer to the vibrant daily life of the locals. **Included Excursion**

Guided tour of Porto

**EmeraldPLUS** A cruise through Porto

**EmeraldACTIVE** Guided active walk in Porto

**DiscoverMORE** Visit to Quinta da Aveleda (extra expense)

**DiscoverMORE** Guided bike tour to the Atlantic (extra expense)

---

**Day 8**  
**Saturday**  
**13 June**

### **Porto (B)**

After breakfast, it's time to say farewell to your Star-Ship and fellow guests, taking memories of sun-drenched vineyards with you.

This itinerary is a guide only and may be amended for operational reasons such as high and low water. As such, the cruise may operate altered from that stated above. Please refer to our terms and conditions for further information.

## Included in your price

- \* All meals - amazing cuisine
- \* All drinks
- \* Gratuities
- \* Excursions as shown
- \* Travel from your door to Humberside airport
- \* Past guest loyalty discount minimum £100

For bookings & further information contact:

**MARIONOWENTRAVEL** TEL 01482 212525

or visit us in person Monday to Friday 9am - 4pm  
23 Portland Street, HULL, HU2 8JX